



ACTIVITY SHEET

TREE OF PERSEVERANCE



Activity idea: elementary cycles 1, 2, and 3; high school

This is an opportunity to help your students understand that there's no shame in admitting they have trouble at school. The important thing is to learn and, with the support of your friends and family, to overcome challenges.

Draw a large tree on the board with three branches but no leaves. Introduce it as the tree of perseverance. Explain that the leaves grow when they, the students, make an effort to succeed, with the help of their friends and family.

Have the students identify the challenges they face at school. These challenges may involve learning, but they may also be on the social or family level. Have each student draw 15 leaves (or use those to be cut out provided in this file).

FOR VERY YOUNG STUDENTS

Have each student cut out and colour the leaves and write their initials on them.

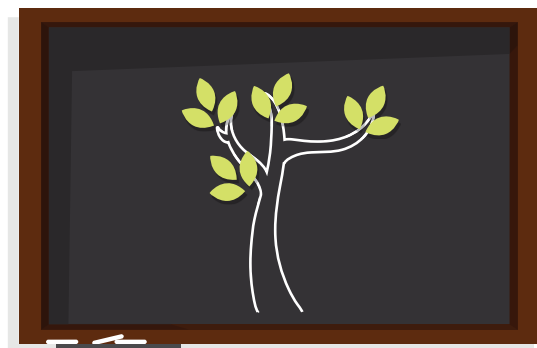
FOR OLDER STUDENTS

(variable depending on age)

Have them write how they can overcome their challenges on the leaves: ***"I have to overcome this challenge to succeed. Who around me can help? And above all, how? What can this person do to help me persevere?"***

Every day during Hooked on School Days, let each student come up and stick three leaves on a branch. With all of this effort, the tree will gradually grow its foliage over the course of the week.

Take a picture of your tree of perseverance and share it on your social media accounts using the hashtag **#JPS2019**, or post it on your school board's website.





**HOOKED
ON SCHOOL
DAYS**